

Costly Reactions: The economic and social cost of allergic disease in Australia | Key insights

Impacts of allergic disease are far reaching

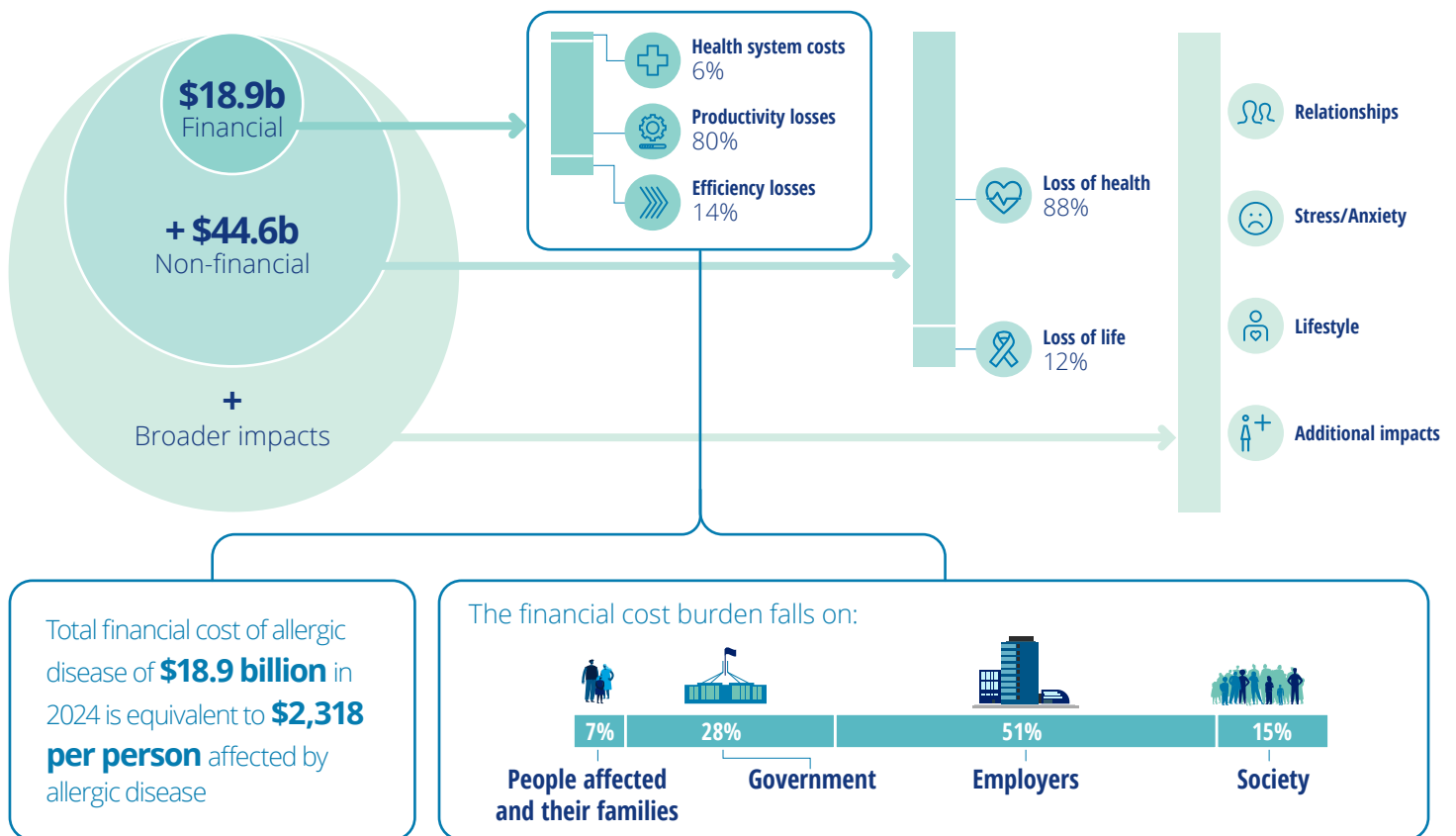
Around **8.2 million Australians** were affected by allergic disease in 2024
...comprising a total of **16.4 million allergic conditions**

30%
of Australians



Many people – and households – manage at least two allergic conditions at the same time

Allergic disease has a large burden



Opportunities

Continued support for the National Allergy Council and National Allergy Centre of Excellence (NACE) programs is essential to delivering meaningful improvements to the millions of Australians living with allergic disease. There is an opportunity to support better outcomes for people living with allergic disease through:



Clinical care and public health programs



Supporting and upskilling health professionals



Quality and availability of data related to allergic disease



Further allergic disease prevention and management research

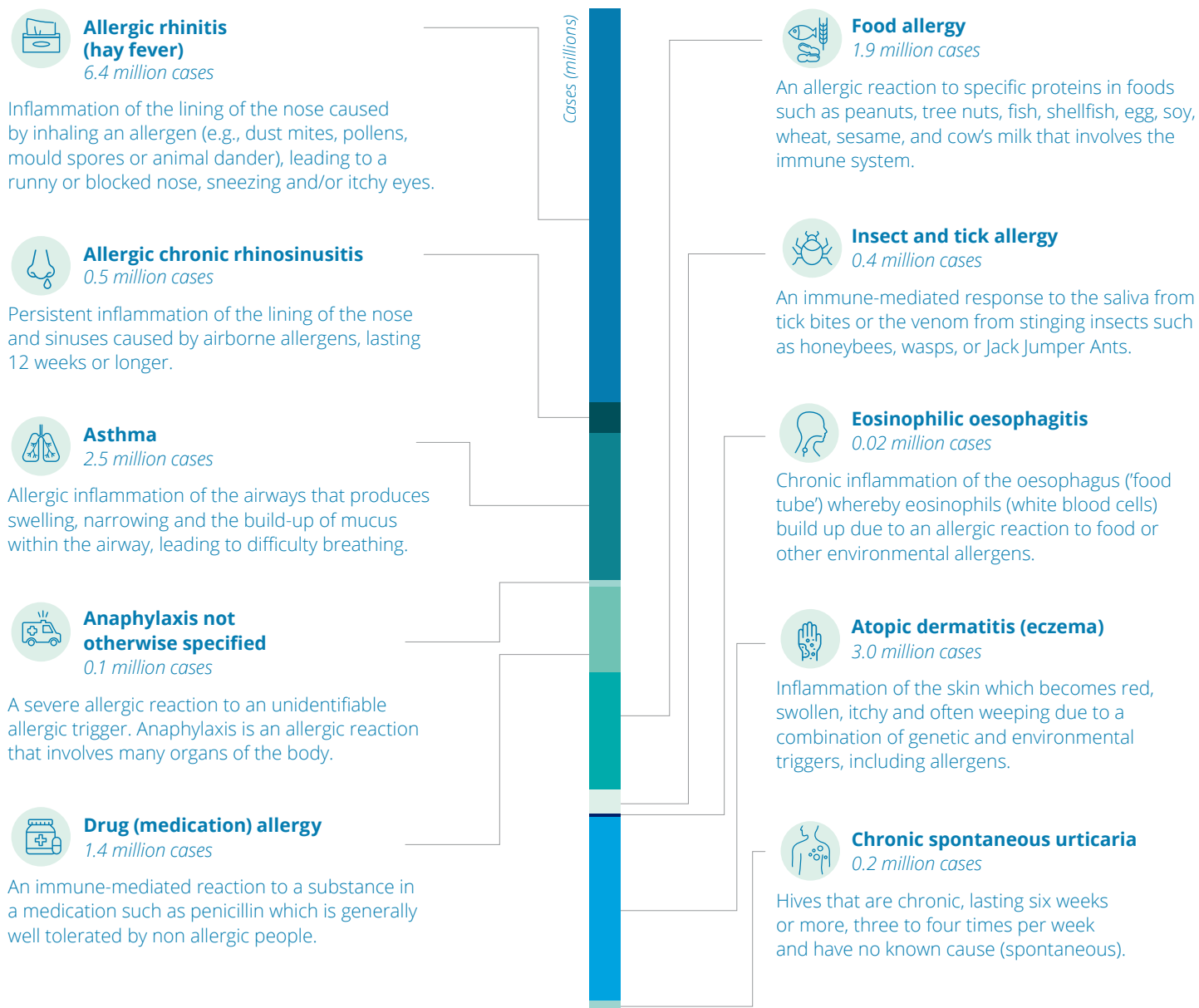


Recognition of allergic disease as a chronic health condition

Definitions

Allergic disease occurs when a person's immune system reacts abnormally to everyday substances.

Types of allergic conditions include:



About us

The National Allergy Council is a partnership between two peak professional and patient bodies for allergy: the Australasian Society of Clinical Immunology and Allergy (ASCIa) and Allergy & Anaphylaxis Australia. The National Allergy Centre of Excellence is Australia's peak allergy research body. Together, they collaborate to improve education and training, drive new knowledge and transform evidence-based care of Australians living with allergic disease, one of the fastest-growing chronic conditions and public health issues in the country. Deloitte Access Economics is Australia's pre-eminent economics advisory practice and a member of Deloitte's global economics group.



Scan the QR code to read the full report

Contact

Dr Sandra Vale (PhD)

Chief Executive Officer
National Allergy Council

e sandra@nationalallergy.org.au
w nationalallergycouncil.org.au

Jill Smith

Chief Executive Officer
Australasian Society of Clinical Immunology and Allergy (ASCIa)

e jill@allergy.org.au
w www.allergy.org.au

Sruthi Srikanthan

Partner
Deloitte Access Economics

e ssrikanthan@deloitte.com.au
w <https://www.deloitte.com/au/en.html>