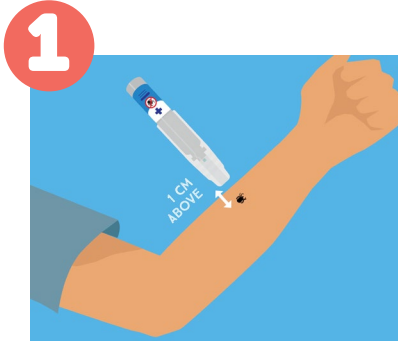


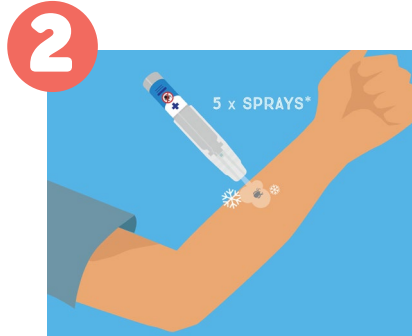
HOW TO SAFELY REMOVE A TICK

When removing ticks, it is important that ticks **are not** removed or touched. Disturbing a tick may cause more tick saliva to be injected into the body by the tick.

Freeze it, don't squeeze it!
Ether containing sprays* freeze and kill the tick.



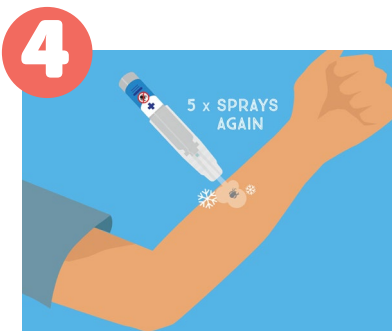
Take the ether containing spray and place it about 1 cm above the tick.



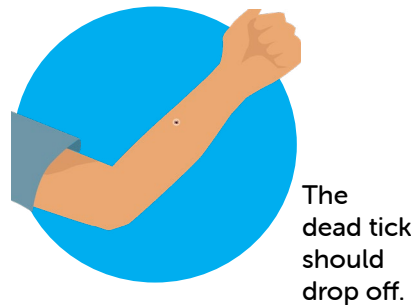
Using the ether containing spray, spray the tick 5 times.



After a few minutes, if you have a magnifying glass, check if the tick is still moving its legs. If the tick has stopped moving, it is dead.



If you don't have a magnifying glass or if the tick is not dead, spray the tick 5 times again.



The dead tick should drop off.



If the tick does not drop off, have it safely removed by a health professional using fine-tipped forceps.



Do not use household tweezers to remove the tick, as this will cause it to squeeze allergen-containing saliva into your body, even if the tick is dead.

If you have a tick allergy, follow the instructions on your ASCIA Action Plan.

If you do not have ether containing spray – seek medical help to remove the tick. Ether containing sprays can be purchased over the counter from your local pharmacy.

* Medi Freeze Tick Off or Wart-Off Freeze are types of ether containing sprays.

ACTION FOR ANAPHYLAXIS

- Lay person flat - do NOT allow them to stand or walk
 - If unconscious, place in recovery position
 - If breathing is difficult allow them to sit
- Give adrenaline autoinjector
- Phone ambulance - 000 (AU) or 111 (NZ)
- Phone family/emergency contact
- Further adrenaline doses may be given if no response after 5 minutes
- Transfer person to hospital for at least 4 hours of observation

If in doubt give adrenaline autoinjector
Commence CPR at any time if person is unresponsive and not breathing normally

ALWAYS give adrenaline autoinjector FIRST, and then asthma reliever/puffer! if someone with known asthma and allergy to food, insects or medication has SUDDEN BREATHING DIFFICULTY (including wheeze, persistent cough or hoarse voice) even if there are no skin symptoms
Asthma reliever medication prescribed:

* If adrenaline is accidentally injected (e.g. into a thumb) phone your local poisons information centre.
Continue to follow this action plan for the person with the allergic reaction.

This project received funding from the Australian Government Department of Health



Proudly supported by:

